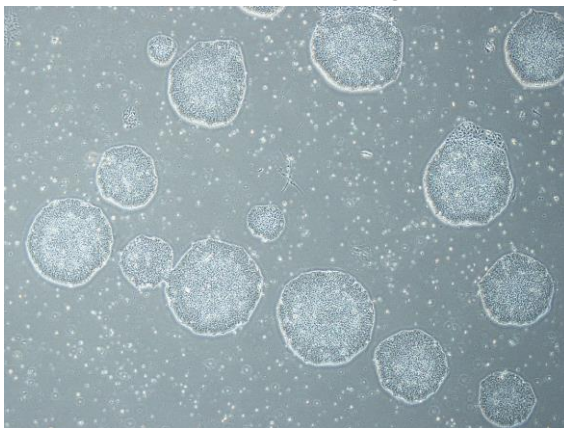


## 【 CiRA-j-1466 】 Morphology of iPSC colonies

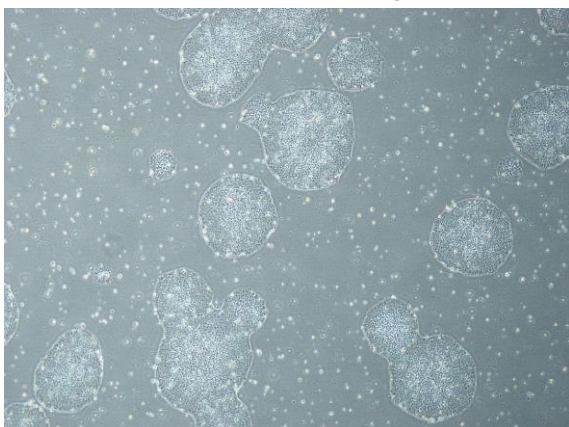
CiRA-j-1466-A: passage-3



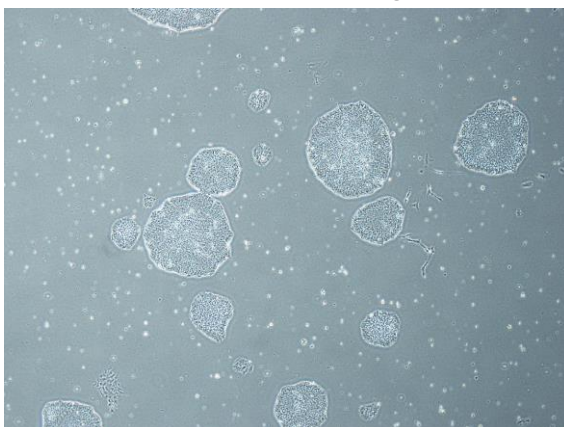
CiRA-j-1466-B: passage-3



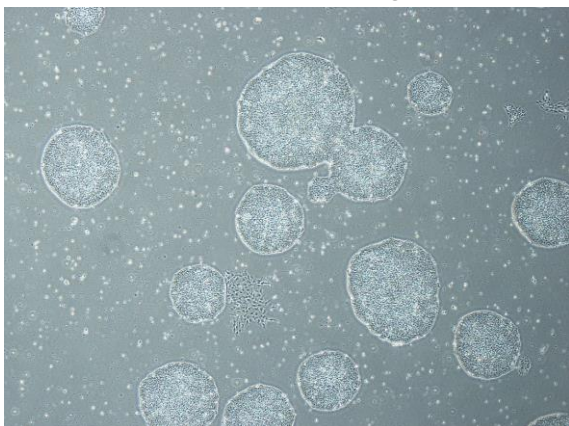
CiRA-j-1466-C: passage-3



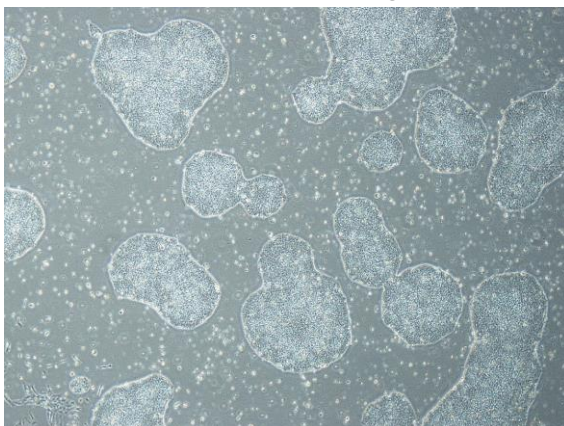
CiRA-j-1466-D: passage-3



CiRA-j-1466-E: passage-3



CiRA-j-1466-F: passage-3



( All images were captured at 4x magnification )